

## Adaptive phenotypic plasticity in malaria parasites is not constrained by previous responses to environmental change

Philip L. G. Birget<sup>1\*</sup>, Petra Schneider<sup>1\*#</sup>, Aidan J. O'Donnell<sup>1</sup> and Sarah E. Reece<sup>1</sup>

<sup>1</sup>Institute of Evolutionary Biology & Institute of Immunology and Infection Research, School of Biological Sciences, University of Edinburgh, Charlotte Auerbach Road, Edinburgh EH9 3FL, United Kingdom.

\*Shared first authors.

# **Corresponding author:** Petra Schneider, Institute of Evolutionary Biology & Institute of Immunology and Infection Research, School of Biological Sciences, University of Edinburgh, Charlotte Auerbach Road, Edinburgh EH9 3FL, United Kingdom. Telephone: +44-1316519219. Email: [petra.schneider@ed.ac.uk](mailto:petra.schneider@ed.ac.uk)

E-mails: [philipbirget@gmail.com](mailto:philipbirget@gmail.com), [petra.schneider@ed.ac.uk](mailto:petra.schneider@ed.ac.uk), [aidan.odonnell@ed.ac.uk](mailto:aidan.odonnell@ed.ac.uk), [sarah.reece@ed.ac.uk](mailto:sarah.reece@ed.ac.uk)

**Short title:** ghosts of the plastic past?

**Keywords:** Life history theory, *Plasmodium*, resource allocation trade off, phenotypic plasticity, survival, reproduction.

**Lay Summary:** Malaria parasites have evolved flexible strategies to cope with the changing conditions they experience during infections. We show that using such flexible strategies does not impact upon the parasites' ability to grow (resulting in disease symptoms) or transmit (spreading the disease).

**Word counts:**

Abstract: 249; Text: 4011; Number of elements: 3

© The Author(s) 2019. Published by Oxford University Press on behalf of the Foundation for Evolution, Medicine, and Public Health. This is an Open Access article distributed under the terms of the Creative Commons Attribution License (<http://creativecommons.org/licenses/by/4.0/>), which permits unrestricted reuse, distribution, and reproduction in any medium, provided the original work is properly cited.

## ABSTRACT

**Background and objectives.** Phenotypic plasticity enables organisms to maximise fitness by matching trait values to different environments. Such adaptive phenotypic plasticity is exhibited by parasites, which experience frequent environmental changes during their life cycle, between individual hosts, and also in within-host conditions experienced during infections. Life history theory predicts that the evolution of adaptive phenotypic plasticity is limited by costs and constraints, but tests of these concepts are scarce.

**Methodology.** Here, we induce phenotypic plasticity in malaria parasites to test whether mounting a plastic response to an environmental perturbation constrains subsequent plastic responses to further environmental change. Specifically, we perturb red blood cell resource availability to induce *Plasmodium chabaudi* to alter the trait values of several phenotypes underpinning within-host replication and between-host transmission. We then transfer parasites to unperturbed hosts to examine whether constraints govern parasites' ability to alter these phenotypes in response to their new in-host environment.

**Results.** Parasites alter trait values in response to the within-host environment they are exposed to. We do not detect negative consequences, for within-host replication or between-host transmission, of previously mounting a plastic response to a perturbed within-host environment.

**Conclusions and implications.** We suggest that malaria parasites are highly plastic and adapted to adjusting their phenotypes in response to the frequent changes in the within-host conditions they experience during infections. Our findings support the growing body of evidence that medical interventions, such as anti-parasite drugs, induce plastic responses that are adaptive and can facilitate the survival and potentially, drug resistance of parasites.

## INTRODUCTION

The ability to alter aspects of phenotype in response to changes in environmental conditions (phenotypic plasticity) is commonly observed in multicellular organisms (1-3). But the notion that phenotypic plasticity is central to the fitness of parasites has been met with controversy in medicine and parasitology (4, 5). This is likely due to the longstanding assumption that parasites, since they live inside their hosts, are sheltered from the rapidly changing conditions of the exterior environment, such as weather, temperature and predators, light and dark, and that there is a high autocorrelation in conditions experienced during infections and between hosts (6, 7). An alternative view is that parasites are actually confronted with frequent and fast changing within-host conditions during each infection, as well as variation in conditions experienced in different hosts (particularly for parasites with complex, multi-host, life cycles). A number of within-host environmental factors vary during infections and across hosts, including the availability of resources, mating opportunities, immune responses, intensity of competition with co-infecting parasites, medical interventions, and daily rhythms in host physiology. Parasites, stemming from diverse phyla, appear to cope with the challenges and opportunities arising from variable within-host conditions using phenotypic plasticity in a wide variety of traits. For example, the nematode *Strongyloides ratti* modifies its (generally stable) transcriptome in immunised hosts to avoid expulsion (8). The trematode *Coitocaecum parvum* adopts a 3-host or a 2-host lifecycle depending on the availability of appropriate definitive hosts (9). Bacteriophages vary their lysis/lysogeny decision, and malaria parasites their sex ratio and reproductive effort, in response to co-infecting conspecific genotypes (10, 11).

Like all traits, the evolution and expression of phenotypic plasticity is assumed to be subject to costs, constraints, and trade-offs. These concepts are often hard to define and differentiate, and so are rarely examined empirically (12), especially for parasites/pathogens (5). Costs of plasticity can be thought of as phenomena that reduce the fitness of a plastic genotype compared to a non-plastic genotype expressing the same trait value (12, 13). Constraints of plasticity can be defined as phenomena that prevent organisms from reaching the optimal phenotype that a given environment demands (13). For example, plasticity of many developmental traits is constrained by a window of

sensitivity, i.e. a trait is only responsive to environmental change during early development and becomes fixed for the remaining lifetime of the individual. Thus, there is a risk that a trait is beneficial in early life but may become suboptimal at a later point because environmental conditions are likely to change. Such constraints include so called "trans-host effects" (in analogy with transgenerational effects on genetic expression), which occur when, for example, environmental conditions in the current host affect the behaviour of a parasite in the next host (14-17). Analogous effects could occur during dynamic infections if parasites are unable to keep up with rapid changes in immune responses and resource availability. Thus, if parasites rely on phenotypic plasticity to optimise host exploitation and maximise transmission, then the history of hosts/cells/within-cell conditions that parasites have experienced could constrain the trait values of adaptive plastic responses to future conditions as well as reduce within-host replication, shorten infection duration, or lower the rate of between-host transmission (18-20).

Here, we use the rodent malaria parasite *Plasmodium chabaudi* to explore the consequences of deploying plasticity. We do not test for inherent costs of plasticity because that would require comparing plastic and non-plastic parasites. Because non-plastic *P. chabaudi* genotypes do not exist, we use a different approach and test whether the effect of plasticity in response to an environmental change affects future responses and parasite performance.

Malaria parasites replicate asexually in the vertebrate host's red blood cells, but need to produce non-replicating sexual stages ("gametocytes") for between-host transmission, resulting in a trade-off between the allocation of resources to within-host replication and between-host transmission (21). Malaria parasites adaptively adjust the proportion of each cohort of asexually replicating stages that commits to gametocyte development ("conversion rate") in response to within-host environmental conditions, including resource availability, competition with co-infecting parasites and antimalarial drug treatment (22-31). Plasticity in other traits that underpin within-host replication also exists. For example, *Plasmodium berghei* reduces the number of progeny (merozoites) produced per asexual stage ("burst size") in response to caloric restriction of the host (32), and *P. chabaudi* increases burst size in anaemic hosts (33). We harness the plastic responses of *P. chabaudi* to host anaemia (33) to investigate the impact of previous plastic responses on trait values for conversion rate, burst size and asexual replication. Specifically, we exposed parasites to either control hosts or anaemic hosts, to generate parasites with a different history of plasticity-driven trait values. Subsequently, we mimic a rapid change of the within-host environment by transferring parasites from each control host and each anaemic host to non-anaemic hosts that serve as a common garden, i.e. parasites from both initial environments experience the same final within-host environment. An impact of the history of past within-host conditions and/or previously mounting a plastic response (beyond the reduction of asexual parasite densities), should manifest as a difference in trait values in the common garden hosts.

## METHODS

The experiment comprised of two sets of hosts (Fig. 1). Parasites in initial hosts experienced a within-host environment of untreated hosts or of phenylhydrazine (PHZ) treated, anaemic hosts. Parasites were then transferred from the initial hosts to untreated, common garden hosts. We monitored the dynamics of asexual parasites and gametocytes, and burst size (number of merozoites/schizont) in the initial hosts to confirm parasites adopt different trait values due to mounting plastic responses to anaemia, and then monitored traits in the common garden hosts.

### Parasites and hosts

We obtained C57BL/6 female mice (aged 6-8 weeks) in-house (University of Edinburgh) and the *Plasmodium chabaudi* clone AS (AS12537) from the Edinburgh Malaria reagent repository. All animal care was in accordance with institutional and UK Home Office guidelines. *P. chabaudi* was isolated

from African thicket rats (*Grammomys poensis*, previously called *Thamomnys rutilans*) in Central Africa (34), and *Mus musculus* is a natural host for some rodent malaria species (35). After cloning, genotype AS has been cryopreserved and undergone regular transmission through mosquitoes to maintain its wild type phenotype (36). We treated initial hosts 4 days before infection (day -4 post-infection (PI)) with a single intraperitoneal injection of either 30 mg/kg of phenylhydrazine dissolved in phosphate buffered saline (PHZ, n=14) or phosphate buffered saline (Control, n=11). Phenylhydrazine causes anaemia by provoking the premature clearance of mature red blood cells (RBC), leading to the release of immature red blood cells (reticulocytes) into the blood as shown in (23) through an erythropoietin-mediated feedback loop (37).

All initial hosts received an intravenous injection of  $5 \times 10^6$  AS-parasitized RBCs on day 0 PI. On day 4 PI, we transferred  $5 \times 10^6$  parasitized RBCs from each initial host into a randomly chosen, untreated, common garden host (CG hosts, n=25) by a one-to-one intravenous passage. Given that all hosts were inbred and age and sex matched, our design simulates a rapid change in within-host conditions (without the confounding effects of age of infection). We chose untreated hosts for our common garden hosts because *P. chabaudi* replicates faster in PHZ-treated compared to untreated hosts (23, 33). This suggests that untreated hosts may provide a harsher environment for the parasites, in which constraints may be more easily observed. We designate the common garden hosts that received their parasites from a PHZ-treated initial host as an “ExPHZ” infection (n=14) and those that received their parasites from a control initial host as an “ExControl” infection (n=11). We monitored infections in the initial hosts from days 1-4 PI and from days 1-16 PI in the common garden hosts. Our design thus relies on three assumptions: first, that parasites encounter different within-host environments between PHZ-treated and control initial hosts, and second, that parasites exhibit different phenotypes between PHZ-treated and control initial hosts. Third, we assume that different phenotypes between the PHZ-treated and control initial hosts do not result from genetic adaptation to our reticulocyte-rich anaemic hosts. Such adaptation is extremely unlikely in our experiment for several non-mutually exclusive reasons: (i) parasites were expanded from cryopreservation in untreated hosts that are not reticulocyte-rich anaemic hosts. Any favourable variants would therefore have to be selected for in only 3 replication cycles in our initial hosts; (ii) for a single mutation to underpin such evolution, the highest possible estimate for a mutation to arise and expand in this time would result in the ‘adapted parasites’ to be at approx. 0.01% of the total parasite population; (iii) serial passage can result in genetic evolution in *P. chabaudi* but this generally requires 11-20 passages of infections each lasting at least 7 days (38-40); (iv) plasticity may constrain genetic evolution because the ability to adjust trait values to suit the new environment buffers against fitness loss due to environmental changes, which in turn reduces the strength of selection on fixed traits (41); (v) Any adaptation to specifically infect reticulocytes is unlikely to have provided significant fitness benefits because even in PHZ-treated hosts, reticulocytes comprise a minority of the total RBC population.

### Data collection and analysis

For all initial and common garden hosts, we measured RBC density and RBC age structure (the proportion of RBCs that are immature RBCs; i.e. reticulocytes), the proportion of RBCs infected with asexual stages, and gametocyte density daily, with the exception of day 1 PI gametocyte density in the initial hosts. We quantified RBC density from 2 $\mu$ L blood by flow cytometry (Beckman Coulter), and made thin blood smears to count the ratio of mature (normocytes) to immature (reticulocytes) RBCs, as well as the proportion of asexual stage infected RBCs, by microscopy. We quantified gametocyte densities from 10 $\mu$ L blood samples by reverse-transcriptase quantitative PCR (42) as previously described (23). We assessed burst size on day 4 PI as the number of merozoites counted from the first 30 mature schizonts observed on blood smears taken shortly before schizogony (from a random subset of n=4 per treatment for the initial hosts, and for all common garden host infections).

We characterised the within-host environment based on the density of total red blood cells (i.e. the combined density of normocytes and reticulocytes) and their age structure (i.e. the proportion of RBCs that are reticulocytes). We calculated daily asexual parasite densities by multiplying RBC density with the proportion of infected RBCs, and used daily asexual parasite densities to derive replication rate ( $replication\ rate\ day\ t = \frac{asexual\ parasite\ density\ day\ (t + 1)}{asexual\ parasite\ density\ day\ (t)}$ ). It was only possible to calculate conversion rates for infections of CG hosts since data from a longer infection duration than in the initial hosts is required to use a state-of-the-art spline-based model, developed by Greischar *et al.* (43).

All calculations and statistical analysis were carried out using R version 3.2.4. To analyse the dynamics of host and parasite traits during the infections, we used linear mixed effect models including treatment, day PI and their interaction as fixed effects, and mouse identification number as a random effect to account for repeated measures. For the analyses of burst size data we used linear mixed effect models including treatment as a fixed effect, and mouse identification number as a random effect to account for repeated measures. We minimised nested models using maximum likelihood deletion tests, and we transformed response variables to meet assumptions of homogeneity of variance (proportion of reticulocytes and replication rates were square root transformed, whilst asexual parasite density, gametocyte density and conversion rate were  $\log_{10}$  transformed adding half a counting unit to all data to deal with zero values according to (44)). To compare infections in initial with common garden hosts, we used only data covering the same sample time points in both data sets. We first used the above approach to verify that there was a difference between the 4 host types, and subsequently compared the 4 host type model with a model that groups untreated initial hosts with the common garden hosts (i.e. PHZ vs. Control+ExControl+ExPHZ) to confirm that the PHZ is the outlying group. We present significant test statistics in the text, whilst full statistical details are shown in Table S1.

## RESULTS

Our experiment required comparing plasticity in parasite traits for parasites originating from either untreated (Control) or anaemic, phenylhydrazine-treated (PHZ) initial hosts, after being placed in the same environment: untreated, non-anaemic common garden hosts (ExControl, ExPHZ). First, we confirm the assumption that parasites experience different environments in Control and PHZ-treated initial hosts. Second, we confirm that parasites adopt different phenotypes in Control and PHZ-treated initial hosts. Third, we compare the trait values of parasites - stemming from different types of initial hosts - in common garden hosts (ExControl vs ExPHZ), to test for effects of previous plasticity, *i.e.* the trait values adopted in initial hosts.

### RBC environments and parasite traits vary between PHZ-treated and control initial hosts

Phenylhydrazine treatment generated anaemia, which was maintained in the PHZ-treated initial hosts throughout days 0-4 PI, as measured by a decrease in RBC densities (treatment \* dayPI interaction:  $\chi^2(4)=13.92$ ,  $p=0.0076$ ) and an increased proportion of RBCs that were reticulocytes (treatment effect:  $\chi^2(1)=44.31$ ,  $p<0.0001$ ) (Fig. 2A, B).

Parasites adopted different trait values in control and PHZ-treated initial hosts in the manners previously described (23, 33). First, daily asexual replication rates varied between treatments (treatment \* dayPI interaction:  $\chi^2(2)=15.96$ ,  $p=0.0003$ ), with replication rates in PHZ-treated hosts higher than in untreated hosts on day 1 PI (Fig 2C). This results in differences between treatments for the dynamics of asexual densities during days 1-4 PI (treatment \* dayPI interaction:  $\chi^2(3)=21.51$ ,  $p<0.0001$ ), with higher asexual parasite densities in PHZ-treated initial hosts than in control initial hosts during days 2-4 PI (Fig. 2D). Second, parasites in PHZ-treated initial hosts produced, on average, 1.15 times more merozoites per schizont than parasites in control initial hosts ( $\chi^2(1)=12.73$ ,  $p=0.0004$ , Fig. 2E). Third, the dynamics of gametocytes densities differed between treatments

(treatment \* dayPI interaction:  $\chi^2(2)=9.92$ ,  $p=0.0070$ ), with gametocyte densities in PHZ-treated initial hosts higher than those in control initial hosts (Fig 2F).

### Trait values in the common garden hosts

The dynamics of RBC densities (treatment:  $\chi^2(1)=0.002$ ,  $p=0.9617$ ) and of proportion of reticulocytes (treatment:  $\chi^2(1)=0.001$ ,  $p=0.9719$ ) were not significantly different between the two groups of untreated common garden hosts (ExPHZ and ExControl) for days 0-16 PI (Fig. 3A, B). For the time-frame during which data were collected in the initial hosts (days 0-4 PI), the RBC environment did not significantly differ between the untreated common garden hosts (ExPHZ and ExControl) and the control initial hosts (RBC density  $\chi^2(10)=9.74$ ,  $p=0.4634$ ; proportion reticulocytes  $\chi^2(10)=12.07$ ,  $p=0.2804$ ). Thus, the assumption that parasites in control initial hosts and all common garden hosts experienced the same RBC environment was met.

We did not detect any significant differences in asexual stage traits between ExPHZ and ExControl parasites (Fig. 3C-E). This includes the dynamics of replication rate (Fig. 3C, treatment:  $\chi^2(1)=0.27$ ,  $p=0.6059$ ) and of asexual densities (Fig. 3D, treatment:  $\chi^2(1)=0.03$ ,  $p=0.8625$ ), and day 4 PI burst sizes (Fig. 3E, treatment:  $\chi^2(1)=0.058$ ,  $p=0.8103$ ). We did observe a difference in gametocyte dynamics between ExPHZ and ExControl parasites (Fig. 3F, treatment \* dayPI interaction:  $\chi^2(15)=45.24$ ,  $p<0.0001$ ), driven by gametocyte densities at the start of infections. Gametocytes on day 1 PI are likely carried over from the initial hosts as well as originating from the conversion decision of the asexual parasites in the inoculum used to infect the common garden hosts, and therefore reflect the RBC environments of the initial hosts rather than reflecting the performance of parasites in common garden hosts. When excluding day 1 PI from the analysis, neither the treatment \* dayPI interaction ( $\chi^2(14)=13.79$ ,  $p=0.4654$ ) or treatment ( $\chi^2(1)=0.0008$ ,  $p=0.977$ ) were significant (Fig. 3F). Furthermore, daily conversion rates, *i.e.* the proportional investment of asexual parasites into gametocytes, were not significantly different between ExPHZ and ExControl parasites (Fig. 3G, treatment:  $\chi^2(1)=0.18$ ,  $p=0.6748$ ).

## DISCUSSION

We asked whether mounting phenotypically plastic responses to a perturbation of the within host environment imposes longer-term constraints on future plastic responses. Harnessing the diverse phenotypically plastic traits expressed by *P. chabaudi* malaria parasites in response to host anaemia revealed no such effects. Specifically, parasites transferred from anaemic initial hosts exhibited trait values that were not significantly different to those of parasites transferred from control initial hosts. We assume that plasticity in the traits investigated here are at least in part under parasite control. In principle, variation in burst size, replication rate or conversion could be host-imposed. For example, if reticulocytes are more nutritious, (e.g. if they contain more LysoPC (45)), the age structure of RBCs could directly influence replication rate. However, evidence suggests that plasticity in parasite traits is at least in part controlled by parasites. For example, the anaemia-driven increase in burst size and conversion rate is not directly related to growth inside reticulocytes but seems to be a response to the presence of reticulocytes *per se* (23, 28). Furthermore, that conversion rate is altered adaptively in response to a number of within-host variables, exhibits genetic variation, and cannot be explained by differential mortality, strongly suggests parasites control conversion rate (25, 28, 46).

The age composition of RBCs is expected to determine the repertoire of invasion receptors expressed by merozoites (47, 48) because reticulocytes and normocytes offer different ligands. This could constrain the replication rate of parasites coming from a reticulocyte rich, anaemic host if they experience a delay in switching to the repertoire required in the reticulocyte rare environment of a common garden control host. Our data provide no evidence of such a constraint because the dynamics of asexual stages did not vary between the two groups of common garden hosts. Whereas

a reduction in replication rate could be offset by lowering conversion rate and/or increasing burst size, we did not detect any differences in these traits either. Furthermore, gametocyte densities are higher in PHZ-treated initial hosts on day 2PI, whilst originating from the same asexual densities as parasites in the control hosts. Although we did not directly quantify conversion rates in the initial hosts, this implies conversion rates were increased in PHZ-treated hosts, as previously shown (23). Any costs/constraints related to such elevated conversion rates did not affect the replicative capacity of asexual stages or future conversion to gametocytes in common garden hosts. Whilst conversion rate is the plastically adjusted trait, the resulting density of gametocytes is better proxy for short-term transmission probability (i.e. parasite fitness). We found no evidence of fitness costs in terms of lower gametocyte densities in parasites stemming from anaemic initial hosts.

The absence of a detectable effect of previous plasticity may have several, non-mutually exclusive, explanations. (i) It is possible that our experimental design was unable to detect small effects due to low power. (ii) Parasites may readily change reticulocyte/normocyte invasion ligands upon arrival in the common garden hosts. (iii) The repertoire of invasion ligands expressed by *P. chabaudi* may always be diverse enough for efficient invasion independent of RBC age structure (33). (iv) If asexual density is viewed as a fitness proxy, the lower density in control initial hosts on the day of transfer could be viewed as a cost, but this was ameliorated by initiating infections in common garden hosts with a fixed number of parasites. This approach controls the impact of inoculum dose on infection dynamics, allowing us to test for effects of “quality” rather than “quantity” of parasites. (v) Costs/constraints may only manifest as trans-host, or host-vector effects, which we have not tested for. Although we use a sequence of hosts (initial and common garden hosts), we transferred parasites by blood passage, rather than by mosquito (which is the natural route for transmission), to simulate the changes in RBC density and age structure experienced during infections. (vi) The common garden environment provided by naïve hosts was not stressful enough to elicit constraints. For example, Steinger *et al.* report that sib-families of the plant *Sinapis arvensis* that show greater plasticity in specific leaf area also suffer larger fitness costs in a shady environment than in full light conditions (49), and plasticity in internode length in *Ranunculus reptans* is more costly in competitive than under benign conditions (50). Intuitively, naïve hosts appear to be a benign environment. However, given that parasites replicate faster in PHZ-treated compared to untreated hosts (23, 33), this suggests that untreated hosts are the harsher environment, but perhaps not harsh enough. (vii) We tested a single parasite genotype to balance ethical considerations with testing for proof of principle. It is possible that our results may not be easily generalised to other genotypes. However, we generally see qualitatively similar responses to environmental perturbations across the available *P. chabaudi* genotypes. Genotype by environment interactions are sometimes observed but these result in quantitative, rather than qualitative, differences in the genotypes’ responses to environmental change (e.g. 11, 23, 25, 33). Further, across the *P. chabaudi* clone bank, the genotype we chose (AS) displays an intermediate level of plasticity in the traits we studied (a.o. 23), so we expect it is representative of the population. (viii) We only exposed parasites to a single environmental change (anaemic to control hosts) and constraints and limits may only emerge after parasites experience a longer sequence of different within-host conditions. If costs and constraints are mainly exposed in stressful environments (51), future work could examine parasites in common garden hosts that involve competition with con-specific genotypes, in semi-immune hosts, or during drug treatment.

One of the preconditions for plasticity to evolve is that its costs, relative to the negative consequences of suboptimal trait values, must be low (12, 13). For parasites that live in variable environments or that require extensive changes to their traits, selection may have honed rapid responses and minimised costs/constraints. For example, the parasitic nematode *Heligmosomoides polygyrus* increases expression of two immunomodulatory genes in hosts mounting an inflammatory response, but readily reduces expression when in hosts without inflammatory responses, even after

experiencing upregulated inflammation for four parasite generations (52). If costs and constraints do exist, they may only be exposed in stressful environments (51). Thus future work could examine parasites in common garden hosts that involve competition with con-specific genotypes, in semi-immune hosts, or during drug treatment. By using a single parasite genotype (to avoid any confounding effects of genetic variation), we assume that because conversion rates vary day-to-day (Fig. 3G), parasites in both types of initial host and in common garden hosts are paying the costs of environmental sensing. The standing costs of plasticity are thought to be low, but are hard to measure (12, 13); future work that selects for parasites with a fixed conversion rate might allow these costs to be measured. Finally, the generality of our results can be confirmed by extending experiments to include multiple genotypes and species of malaria parasites.

Here we show that parasites are able to rapidly adjust fitness-related life history traits to match changes in conditions experienced in the within-host environment. Mechanisms controlling environmental sensing in malaria parasites are only partly understood (e.g. (32)), but evidence for epigenetic mechanisms governing commitment to gametocytes is accumulating rapidly (53-56). Thus, in the context of conversion at least, our findings suggest these epigenetic mechanisms quickly respond to environmental change. The capacity for rapid and generally appropriate responses to environmental change may play an underappreciated role in treatment failure and the evolution of resistance (57). For example, plasticity in conversion allows parasites to find the best balance between short- and long-term transmission after drug treatment (28). Given that different types of environmental change demand different trait values, could parasites be forced to make suboptimal decisions by exposing them to several such environmental changes, simultaneously?

## SUPPLEMENTARY DATA

Data are available at the Edinburgh DataShare at doi: <https://doi.org/10.7488/ds/2579>

## DECLARATION OF FUNDING AND CONFLICTS OF INTEREST

P.L.G.B. was funded by the FNR of Luxembourg (6009110) and the work was supported by the Royal Society (UF110155), the NERC (NE/K0060029/1) and Wellcome (202769/Z/16/Z). The authors have no conflicts of interest to declare.

## ACKNOWLEDGEMENTS

We are grateful to Ronnie Moonie for technical assistance, to Nick Colegrave, Mark Viney, Kim Prior and Luke McNally for useful discussions and to Giles K. P. Barra for imposing laboratory discipline.

## REFERENCES

1. Scheiner SM; Genetics and evolution of phenotypic plasticity. *Annu Rev Ecol Sys* 1993; **24**: 35-68. doi: 10.1146/annurev.es.24.110193.000343.
2. Schlichting CD, Smith H; Phenotypic plasticity: linking molecular mechanisms with evolutionary outcomes. *Evol Ecol* 2002; **16**: 189. doi: 10.1023/A:1019624425971.
3. Pigliucci M. *Phenotypic plasticity: Beyond nature and nurture*. Johns Hopkins University Press, 2001.
4. Kochin BF, Bull JJ, Antia R; Parasite evolution and life history theory. *PLoS Biol* 2010; **8**: e1000524. doi: 10.1371/journal.pbio.1000524.
5. Thomas F, Brown SP, Sukhdeo M, *et al.*; Understanding parasite strategies: a state-dependent approach? *Trends Parasitol* 2002; **18**: 387-90.
6. Sukhdeo MV, Sukhdeo SC; Optimal habitat selection by helminths within the host environment. *Parasitology* 1994; **109**: S41-55.
7. Viney M, Cable J; Macroparasite life histories. *Curr Biol* 2011; **21**: R767-R774. doi: 10.1016/j.cub.2011.07.023.



8. O'Meara H, Barber R, Mello LV, *et al.*; Response of the *Strongyloides ratti* transcriptome to host immunological environment. *Int J Parasitol* 2010; **40**: 1609-17. doi: 10.1016/j.ijpara.2010.06.005.
9. Lagrue C, Poulin R; Life cycle abbreviation in the trematode *Coitocaecum parvum*: can parasites adjust to variable conditions? *J Evol Biol* 2007; **20**: 1189-95. doi: 10.1111/j.1420-9101.2006.01277.x.
10. Leggett HC, Benmayor R, Hodgson DJ, *et al.*; Experimental evolution of adaptive phenotypic plasticity in a parasite. *Curr Biol* 2013; **23**: 139-42. doi: 10.1016/j.cub.2012.11.045.
11. Reece SE, Drew DR, Gardner A. Sex ratio adjustment and kin discrimination in malaria parasites. *Nature* 2008; **453**: 609-14. doi: 10.1038/nature06954.
12. Auld JR, Agrawal AA, Relyea RA; Re-evaluating the costs and limits of adaptive phenotypic plasticity. *Proc Biol Sci* 2010; **277**: 503-11. doi: 10.1098/rspb.2009.1355.
13. Murren CJ, Auld JR, Callahan H, *et al.*; Constraints on the evolution of phenotypic plasticity: limits and costs of phenotype and plasticity. *Heredity (Edinb)* 2015; **115**: 293-301. doi: 10.1038/hdy.2015.8.
14. Little T, Birch J, Vale P, *et al.*; Parasite transgenerational effects on infection. *Evol Ecol Res* 2007; **9**: 459-69.
15. Tseng M; Interactions between the parasite's previous and current environment mediate the outcome of parasite infection. *Am Nat* 2006; **168**: 565-71. doi: 10.1086/507997.
16. Benesh DP, Chubb JC, Parker GA; Complex life cycles: why refrain from growth before reproduction in the adult niche? *Am Nat* 2013; **181**: 39-51. doi: 10.1086/668592.
17. Costa G, Gildenhard M, Eldering M, *et al.*; Non-competitive resource exploitation within mosquito shapes within-host malaria infectivity and virulence. *Nat Commun* 2018; **9**: 3474. doi: 10.1038/s41467-018-05893-z.
18. Hakalahti T, Bandilla M, Valtonen ET; Delayed transmission of a parasite is compensated by accelerated growth. *Parasitology* 2005; **131**: 647-56. doi: 10.1017/s0031182005008279.
19. Gleichsner AM, Cleveland JA, Minchella DJ; One stimulus-two responses: Host and parasite life-history variation in response to environmental stress. *Evolution* 2016; **70**: 2640-6. doi: 10.1111/evo.13061.
20. Babayan SA, Read AF, Lawrence RA, *et al.*; Filarial parasites develop faster and reproduce earlier in response to host immune effectors that determine filarial life expectancy. *PLoS Biol* 2010; **8**: e1000525. doi: 10.1371/journal.pbio.1000525.
21. Carter LM, Kafsack BF, Llinas M, *et al.*; Stress and sex in malaria parasites: Why does commitment vary? *Evol Med Public Health* 2013; **2013**: 135-47. doi: 10.1093/emph/eot011.
22. Trager W, Gill GS, Lawrence C, *et al.*; *Plasmodium falciparum*: enhanced gametocyte formation in vitro in reticulocyte-rich blood. *Exp Parasitol* 1999; **91**: 115-8. doi: 10.1006/expr.1998.4347.
23. Birget PLG, Repton C, O'Donnell AJ, *et al.*; Phenotypic plasticity in reproductive effort: malaria parasites respond to resource availability. *Proc Biol Sci* 2017; **284**: 1860. doi: 10.1098/rspb.2017.1229.
24. Cameron A, Reece SE, Drew DR, *et al.*; Plasticity in transmission strategies of the malaria parasite, *Plasmodium chabaudi*: environmental and genetic effects. *Evol Appl* 2013; **6**: 365-76. doi: 10.1111/eva.12005.
25. Pollitt LC, Mideo N, Drew DR, *et al.*; Competition and the evolution of reproductive restraint in malaria parasites. *Am Nat* 2011; **177**: 358-67. doi: 10.1086/658175.
26. Bousema T, Drakeley C; Epidemiology and infectivity of *Plasmodium falciparum* and *Plasmodium vivax* gametocytes in relation to malaria control and elimination. *Clin Microbiol Rev* 2011; **24**: 377-410. doi: 10.1128/cmr.00051-10.
27. Carter LM, Schneider P, Reece SE; Information use and plasticity in the reproductive decisions of malaria parasites. *Malar J* 2014; **13**: 115. doi: 10.1186/1475-2875-13-115.

28. Schneider P, Greischar MA, Birget PLG, *et al.*; Adaptive plasticity in the gametocyte conversion rate of malaria parasites. *PLoS Pathog* 2018; **14**: e1007371. doi: 10.1371/journal.ppat.1007371.
29. Birget PLG, Greischar MA, Reece SE, *et al.*; Altered life history strategies protect malaria parasites against drugs. *Evol Appl* 2018; **11**: 442-55. doi: 10.1111/eva.12516.
30. Peatey CL, Skinner-Adams TS, Dixon MW, *et al.*; Effect of antimalarial drugs on *Plasmodium falciparum* gametocytes. *J Infect Dis* 2009; **200**: 1518-21. doi: 10.1086/644645.
31. Reece SE, Ali E, Schneider P, *et al.*; Stress, drugs and the evolution of reproductive restraint in malaria parasites. *Proc Biol Sci* 2010; **277**: 3123-9. doi: 10.1098/rspb.2010.0564.
32. Mancio-Silva L, Slavic K, Grilo Ruivo MT, *et al.*; Nutrient sensing modulates malaria parasite virulence. *Nature* 2017; **547**: 213-6. doi: 10.1038/nature23009.
33. Birget PLG, Prior KF, Savill NJ, *et al.*; Plasticity and genetic variation in traits underpinning asexual replication of the rodent malaria parasite *Plasmodium chabaudi*. *Malaria J* 2019; **18**: 222. doi: 10.1186/s12936-019-2857-0.
34. Killick-Kendrick R. *Taxonomy, Zoogeography and Evolution, in Rodent malaria*. New York.: Academic Press, 1978.
35. Boundenga L, Ngoubangoye B, Ntie S, *et al.*; Rodent malaria in Gabon: Diversity and host range. *Int J Parasitol Parasites Wildl* 2019; **10**: 117-124
36. Spence PJ, Jarra W, Levy P, *et al.*; Vector transmission regulates immune control of *Plasmodium* virulence. *Nature* 2013; **498**: 228-31. doi: 10.1038/nature12231.
37. Savill NJ, Chadwick W, Reece SE; Quantitative analysis of mechanisms that govern red blood cell age structure and dynamics during anaemia. *PLoS Comput Biol* 2009; **5**: e1000416. doi: 10.1371/journal.pcbi.1000416.
38. Barclay VC, Sim D, Chan BHK, *et al.*; The evolutionary consequences of blood-stage vaccination on the rodent malaria *Plasmodium chabaudi*. *PLoS Biol* 2012; **10**: e1001368. doi:10.1371/journal.pbio.1001368.
39. Mackinnon MJ, Read AF; Immunity promotes virulence evolution in a malaria model. *PLoS Biol* 2004; **2**: E230. doi: 10.1371/journal.pbio.0020230.
40. Mackinnon MJ; Read AF; Selection for high and low virulence in the malaria parasite *Plasmodium chabaudi*. *Proc Biol Sci* 1999; **266**: 741-8. doi: 10.1098/rspb.1999.0699.
41. Mideo N, Reece SE; Plasticity in parasite phenotypes: evolutionary and ecological implications for disease. *Fut Microbiol* 2012; **7**: 17-2. doi: 10.2217/FMB.11.134.
42. Wargo AR, de Roode JC, Huijben S, *et al.*; Transmission stage investment of malaria parasites in response to in-host competition. *Proc Biol Sci* 2007; **274**: 2629-38. doi: 10.1098/rspb.2007.0873.
43. Greischar MA, Mideo N, Read AF, *et al.*; Quantifying transmission Investment in malaria parasites. *PLoS Comput Biol* 2016; **12**: e1004718. doi: 10.1371/journal.pcbi.1004718.
44. Yamamura K; Transformation using  $(x + 0.5)$  to stabilize the variance of populations. *Res Popul Ecol* 1999; **41**: 229-34. doi: 10.1007/s101440050026.
45. Brancucci NMB, Gerdt JP, Wang C, *et al.*; Lysophosphatidylcholine regulates sexual stage differentiation in the human malaria parasite *Plasmodium falciparum*. *Cell* 2017; **171**: 1532-44.e15. doi: 10.1016/j.cell.2017.10.020.
46. Reece SE, Schneider P; Premature rejection of plasticity in conversion. *Trends Parasitol* 2018; **34**: 633-4. doi: 10.1016/j.pt.2018.06.004.
47. Khan SM, Jarra W, Preiser PR; The 235 kDa rhoptry protein of *Plasmodium (yoelii) yoelii*: function at the junction. *Mol Biochem Parasitol* 2001; **117**: 1-10.
48. Preiser PR, Jarra W, Capiod T, *et al.*; A rhoptry-protein-associated mechanism of clonal phenotypic variation in rodent malaria. *Nature* 1999; **398**: 618-22. doi: 10.1038/19309.
49. Steinger T, Roy BA, Stanton ML; Evolution in stressful environments II: adaptive value and costs of plasticity in response to low light in *Sinapis arvensis*. *J Evol Biol* 2003; **16**(2):313-23.

50. van Kleunen M, Fischer M; Constraints on the evolution of adaptive phenotypic plasticity in plants. *New Phytol* 2005; **166**: 49-60. doi: 10.1111/j.1469-8137.2004.01296.x.
51. Chevin LM, Hoffmann AA; Evolution of phenotypic plasticity in extreme environments. *Philos Trans R Soc Lond B Biol Sci* 2017; **372**: 20160138. doi: 10.1098/rstb.2016.0138.
52. Guivier E, Lippens C, Faivre B, *et al.*; Plastic and micro-evolutionary responses of a nematode to the host immune environment. *Exp Parasitol* 2017; **181**: 14-22. doi: 10.1016/j.exppara.2017.07.002.
53. Brancucci NMB, Bertschi NL, Zhu L, *et al.*; Heterochromatin protein 1 secures survival and transmission of malaria parasites. *Cell Host Microbe* 2014; **16**: 165-76. doi: 10.1016/j.chom.2014.07.004.
54. Coleman BI, Skillman KM, Jiang RHY, *et al.*; A *Plasmodium falciparum* histone deacetylase regulates antigenic variation and gametocyte conversion. *Cell Host Microbe* 2014; **16**: 177-86. doi: 10.1016/j.chom.2014.06.014.
55. Poran A, Notzel C, Aly O, *et al.*; Single-cell RNA sequencing reveals a signature of sexual commitment in malaria parasites. *Nature* 2017; **551**: 95-9. doi: 10.1038/nature24280.
56. Sinha A, Hughes KR, Modrzynska KK, *et al.*; A cascade of DNA-binding proteins for sexual commitment and development in Plasmodium. *Nature* 2014; **507**: 253-7. doi: 10.1038/nature12970.
57. Mideo N, Reece SE; Plasticity in parasite phenotypes: evolutionary and ecological implications for disease. *Future Microbiol* 2012; **7**: 17-24. doi: 10.2217/fmb.11.134.

## FIGURE LEGENDS

**Figure 1.** Experimental set-up. We treated initial hosts with 30mg/kg of PHZ to generate anaemia, or with PBS (control) on day -4 PI, and infected them with  $5 \times 10^6$  *P. chabaudi* AS infected RBCs on day 0 PI. On day 4 PI we transferred  $5 \times 10^6$  infected RBCs from each initial host into common garden hosts by one-to-one passage, and we followed these infections for 16 days. In all sets of hosts, we measured the daily densities (dynamics) of asexual stages and gametocytes, burst size (on day 4 PI) and we estimated conversion rates for the CG hosts.

**Figure 2.** The within-host environment and parasite traits differ between PHZ-treated (PHZ, green) and untreated (Control, purple) initial hosts. Red blood cell densities are lower (RBC dens, A) and the proportion of RBCs that are reticulocytes are higher (Prop retics, B) in PHZ-treated initial hosts. Asexual replication rates were higher in PHZ-treated initial hosts on day 1 PI (C), resulting in higher asexual densities on days 2-4 PI (Asex dens, D). Burst sizes, measured as the number of merozoites per schizont on day 4 PI (E), and gametocyte densities (Gct dens, F) were also higher in PHZ-treated initial hosts. Graphs show mean  $\pm$  sem (A-D, F) or median (black dashed) and 25-75 percentiles, with whiskers 1.5 times the interquartile range and dots representing outliers (E).

**Figure 3.** The within-host environment and parasite traits do not differ between common garden hosts (ExPHZ, green and ExControl, purple). We observed no significant differences in RBC densities (RBC dens, A), the proportion of RBCs that are reticulocytes (Prop retics, B), asexual replication rates (C), asexual parasite densities (Asex dens, D) or burst sizes, measured as the number of merozoites per schizont, on day 4 PI (E) between ExPHZ and ExControl hosts. Gametocyte densities are higher in ExPHZ compared to ExControl hosts on day 1PI only because these gametocytes originate from infections in the initial hosts (Gct dens, F) and conversion rates were not significantly different between common garden hosts (G). Graphs show mean  $\pm$  sem (A-D, F-G) or median (black dashed) and 25-75 percentiles, with whiskers 1.5 times the interquartile range and dots representing outliers (E).

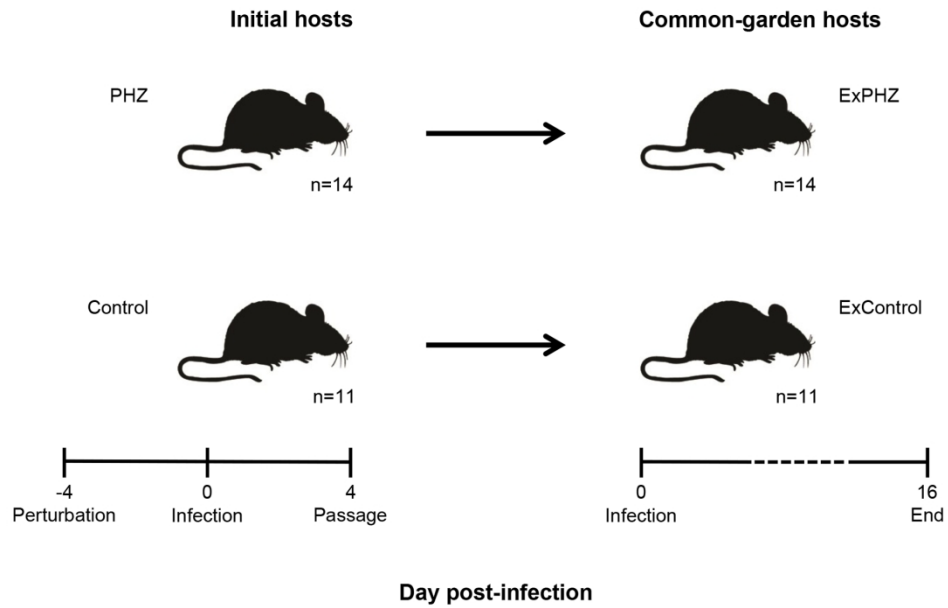


Figure 1. Experimental set-up. We treated initial hosts with 30mg/kg of PHZ to generate anaemia, or with PBS (control) on day -4 PI, and infected them with  $5 \times 10^6$  *P. chabaudi* AS infected RBCs on day 0 PI. On day 4 PI we transferred  $5 \times 10^6$  infected RBCs from each initial host into common garden hosts by one-to-one passage, and we followed these infections for 16 days. In all sets of hosts, we measured the daily densities (dynamics) of asexual stages and gametocytes, burst size (on day 4 PI) and we estimated conversion rates for the CG hosts.

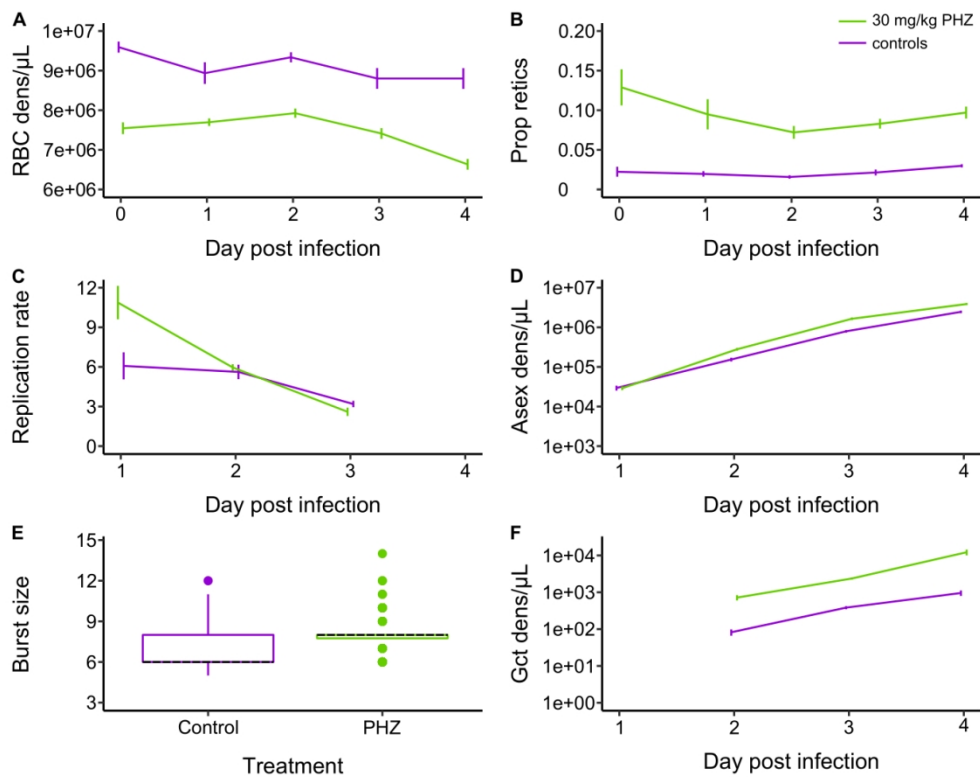


Figure 2. The within-host environment and parasite traits differ between PHZ-treated (PHZ, green) and untreated (Control, purple) initial hosts. Red blood cell densities are lower (RBC dens, A) and the proportion of RBCs that are reticulocytes are higher (Prop retics, B) in PHZ-treated initial hosts. Asexual replication rates were higher in PHZ-treated initial hosts on day 1 PI (C), resulting in higher asexual densities on days 2-4 PI (Asex dens, D). Burst sizes, measured as the number of merozoites per schizont on day 4 PI (E), and gametocyte densities (Gct dens, F) were also higher in PHZ-treated initial hosts. Graphs show mean  $\pm$  sem (A-D, F) or median (black dashed) and 25-75 percentiles, with whiskers 1.5 times the interquartile range and dots representing outliers (E).

118x93mm (300 x 300 DPI)

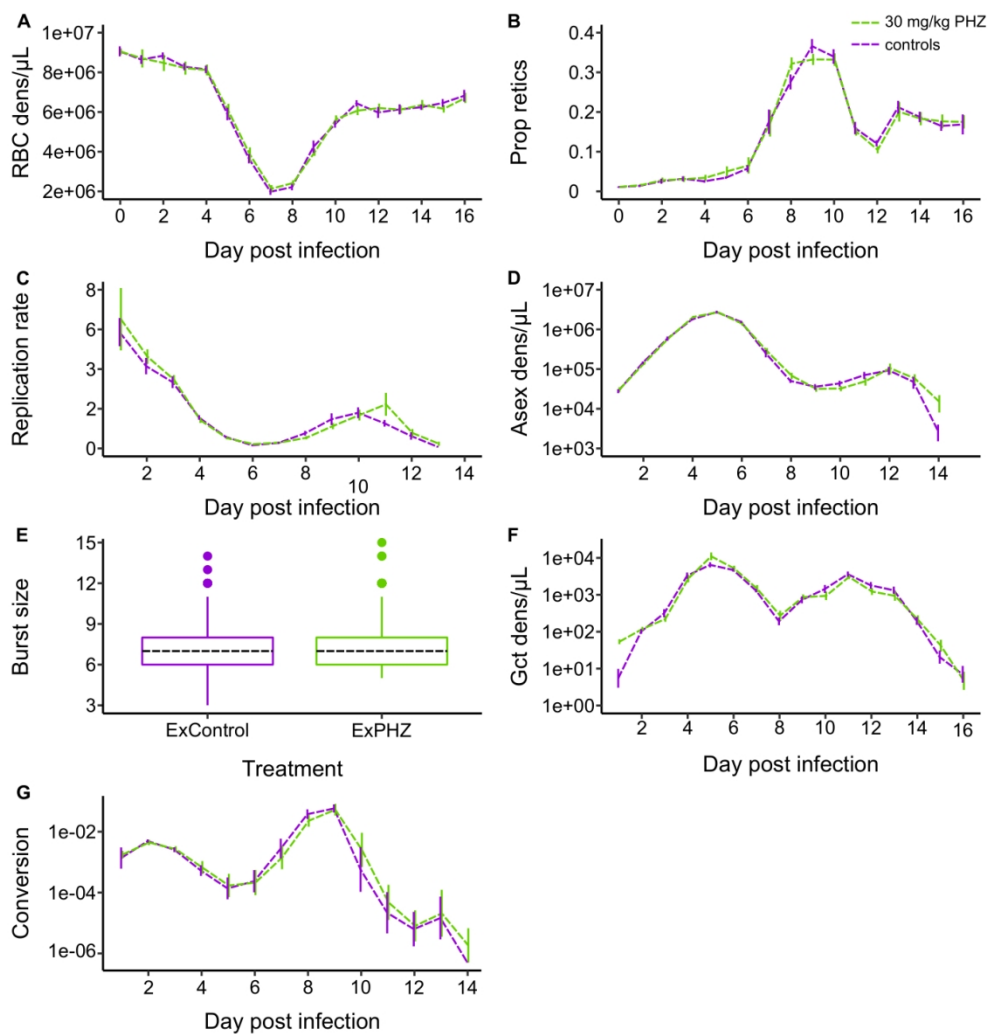


Figure 3. The within-host environment and parasite traits do not differ between common garden hosts (ExPHZ, green and ExControl, purple). We observed no significant differences in RBC densities (RBC dens, A), the proportion of RBCs that are reticulocytes (Prop retics, B), asexual replication rates (C), asexual parasite densities (Asex dens, D) or burst sizes, measured as the number of merozoites per schizont, on day 4 PI (E) between ExPHZ and ExControl hosts. Gametocyte densities are higher in ExPHZ compared to ExControl hosts on day 1PI only because these gametocytes originate from infections in the initial hosts (Gct dens, F) and conversion rates were not significantly different between common garden hosts (G). Graphs show mean  $\pm$  sem (A-D, F-G) or median (black dashed) and 25-75 percentiles, with whiskers 1.5 times the interquartile range and dots representing outliers (E).

118x123mm (300 x 300 DPI)